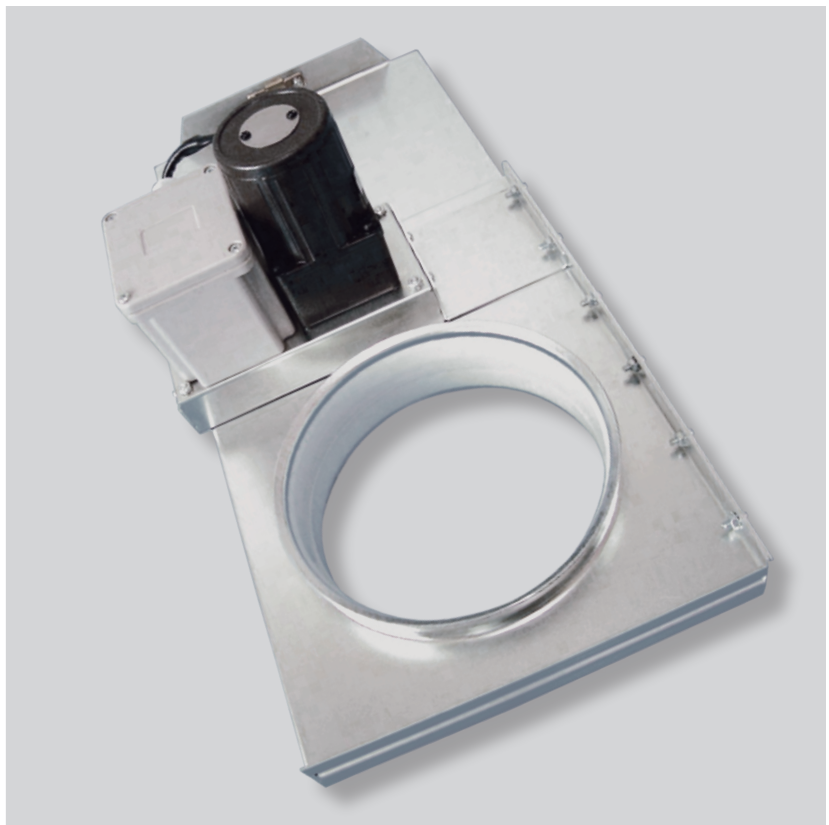


ECO-MOT
ECO-P
Energy-saving blast gate

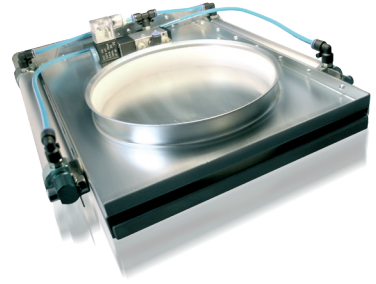


HÖCKER®
POLYTECHNIK

Always one idea ahead

EXHAUST EFFECT IN SECONDS.

Automatic shut-off blast gates for suction pipes are prescribed legally for installation in new plants in many sectors, for reasons of work safety. Customary shut-off blast gates however, are quite bulky, they are difficult to install and are exposed to a high degree of wear and tear due to friction. Moreover, some of the products open very slowly or have drive-weak engines. But not so the ECO-P and ECO-MOT shut-off blast gates: a sealing developed exclusively for this purpose, made of heavy-duty, self-lubricating plastic ensures safe guidance and optimum sealing.



ADVANTAGES / BENEFITS

- Opens and closes automatically -> saves energy and costs
- Double-sided pneumatic cylinder -> fast opening times, immediate suction effect (ECO-P)
- Strong gear motor with push/pull chain drive (ECO-MOT)
- Special plastic sealing ring -> high degree of sealing and hardly any wear and tear
- Smooth running properties -> low noise level
- Compact design -> less space requirement
- Robust steel plate design -> long durability
- Light weight -> quick installation, simple loading in existing system
- Optional bypass function with the help of PLC control
- Rapid, frequent switching cycles for flexible use
- Favorable price due to cost-effective serial production

TECHNICAL DATA

- For suction-side usage in dust removal systems
- Opening / closing time app. 1.5 seconds. Activation duration 100% (ECO-MOT opening time < 6 seconds / activation duration 60%)
- ECO-P and ECO-MOT energy saving valves are available in the common diameters of 100mm to 250mm (without 220/225mm).
- Low-pressure-proof up to 3,500 Pa

Type diameter	Length (open/closed) (mm)	Width (mm)	Height (mm)	E-Pneum.	E-MOT	Weight (kg)
100 mm	380/265	270	190	230 V/5,5VA/P65	230 V/4 W	5,4
120 mm	400/265	270	190	230 V/5,5VA/P65	230 V/4 W	5,4
140 mm	460/305	300	190	230 V/5,5VA/P65	230 V/4 W	6,4
160 mm	480/305	300	190	230 V/5,5VA/P65	230 V/4 W	6,4
180 mm	580/380	350	195	230 V/5,5VA/P65	230 V/10 W	8,0
200 mm	595/380	350	195	230 V/5,5VA/P65	230 V/10 W	8,0
250 mm	700/430	400	200	230 V/5,5VA/P65	230 V/10 W	9,3

All technical details and data are subject to alteration. Misprints and errors reserved.

HÖCKER POLYTECHNIK GmbH

Borgloher Straße 1 · 49176 Hilte · Germany · Fon + 49 (0)5409 405-0 · Fax + 49 (0)5409 405-555

www.hoecker-polytechnik.de · info@polytechnik.de

HÖCKER®
POLYTECHNIK
Always one idea ahead